

SEE LIFE CLEARLY.

CATARACTS AND ASTIGMATISM DEFINED

Cataracts are a buildup of proteins within your eye's natural lens that can cloud your vision and interfere with normal activities, like driving a car, using a computer, or recognizing a familiar face.¹

Astigmatism is a common eye condition which blurs vision at all distances and makes it difficult to see fine detail.

EXCELLENT VISUAL OUTCOMES WITH THE CLAREON® IOL FAMILY

Clareon® IOLs have been developed using an advanced manufacturing process, an exclusive design and the glistening-free* materials of the Clareon® IOL family, to help provide with exceptional clarity after cataract surgery and for years to come.³⁻⁶

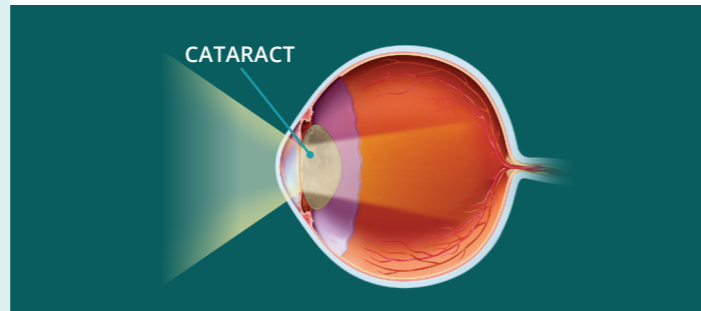
With the Clareon® Toric IOL, you can achieve clear vision at **far** distances, and functional vision in your **intermediate** range (66 cm).^{7,8†}

*Defined as modified Miyata grade 0, <25mv/mm2

†Based on AcrySof® IQ distance-corrected IVA. Clareon® IOL is optically equivalent to AcrySof® IQ

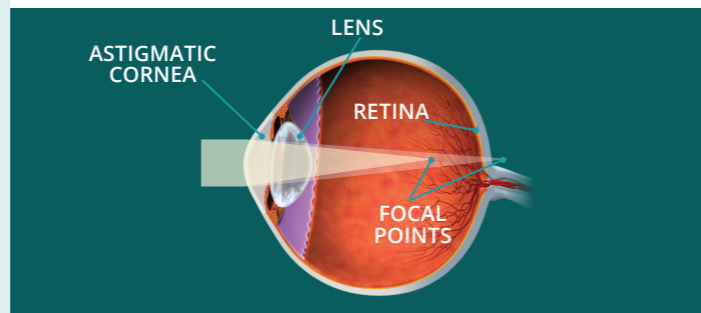
EYE WITH CATARACT

As protein buildup increases over time, your eye's natural lens becomes cloudy and blocks light from passing through.¹



EYE WITH ASTIGMATISM

When the surface of the cornea has an uneven curvature and is shaped more like a football than a basketball, vision becomes distorted.



IMPORTANT PRODUCT INFORMATION

CAUTION: Restricted by law to sale by or on the order of a physician.

DESCRIPTION: The Clareon® Aspheric Family of Lenses are artificial lenses implanted in the eye of adult patients following cataract surgery. The Clareon® Aspheric IOLs are designed to allow for clear distance vision. However, you will likely still need glasses for reading and for distance vision particularly if you already have astigmatism.

The Clareon® Aspheric Toric IOLs are designed to correct preexisting corneal astigmatism, which is the inability of the eye to focus clearly at any distance because of different curvatures on the cornea, and provide distance vision.

Refer to the eDirections for Use for more information regarding indications, contraindications, warnings, precautions, and cautions.

REFERENCES:

1. Cataracts. Mayo Clinic website. <https://www.mayoclinic.org/diseases-conditions/cataracts/symptomscauses/syc-20353790>. Updated June 23, 2018. Accessed April 6, 2021.
2. Cataract surgery. Mayo Clinic website. <https://www.mayoclinic.org/tests-procedures/cataract-surgery/about/pac20384765?page=0&citems=10>. Updated. August 31, 2019. Accessed March 11, 2020.
3. Oshika T, Fujita Y, Inamura M, Miyata K. Mid-term and long-term clinical assessments of a new 1-piece hydrophobic acrylic IOL with hydroxyethyl methacrylate. *J Cataract Refract Surg.* 2020;46(5):682-687.
4. Werner L, Thatthamla I, Ong M, Schatz H, et al. Evaluation of clarity characteristics in a new hydrophobic acrylic IOL in comparison to commercially available IOLs. *J Cataract Refract Surg.* 2019;45(10):1490-1497.
5. Alcon Data on File, 2017.
6. Stanojcic N, O'Brart D, Hull C, et al. Visual and refractive outcomes and glistenings occurrence after implantation of 2 hydrophobic acrylic aspheric monofocal IOLs. *J Cataract Refract Surg.* 2020;46(7):986-994.
7. AcrySof® IQ Vivity® Extended Vision IOL Directions for Use.
8. Alcon Data on File, 2022.

Alcon

© 2022 Alcon Inc. CA-CLT-2200065



SEE THINGS DIFFERENTLY AND CHANGE YOUR LENS ON LIFE.



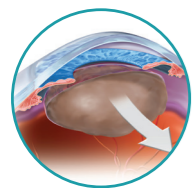
You have a choice of replacement lenses that can correct your cataracts and astigmatism at the same time.

See what's possible with the Clareon® Toric IOL.

Alcon

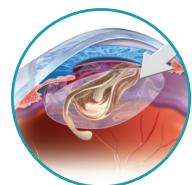
CATARACT SURGERY AT A GLANCE

During cataract surgery, your surgeon replaces your eye's natural lens with a new, artificial lens, called an intraocular lens or an IOL, that restores clarity to your vision.



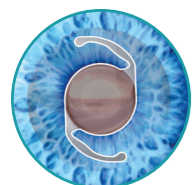
1 CATARACT REMOVAL

Through a tiny incision, the surgeon removes your clouded lens.



2 LENS INSERTION

The surgeon replaces your natural lens with a new artificial lens.



3 VISION RENEWED

With a new toric lens, you can be free from cataracts and astigmatism.²



QUESTIONS TO ASK YOUR DOCTOR

Q. Which astigmatism-correcting cataract replacement lens is right for me?

A. The replacement lens you choose can have a big impact on what you can see and do after surgery. Talk to your surgeon; they can recommend the replacement lens that best fits your specific vision needs.²

Q. How long does it take to recover from cataract surgery?

A. Recovery after cataract surgery is generally quick; usually only a few days.² Most patients have improved vision soon after surgery, and your sight may continue to improve for several days or weeks.

Q. Is cataract surgery safe?

A. All surgeries have risks; however, cataract surgery is one of the safest and most common surgical procedures performed.²

Q. Am I a candidate for an astigmatism-correcting cataract replacement lens?

A. If you have cataracts and astigmatism, ask your surgeon if you're a candidate for any of the Clareon® astigmatism-correcting lens options.

TALK TO YOUR DOCTOR

Make sure to discuss any questions you have with the surgeon who will perform your procedure.

Simulated image with cataracts and astigmatism



Simulated image with a basic monofocal IOL without astigmatism correction



Simulated image with a Clareon® Toric IOL

Although this result is typical, individual results may vary.

